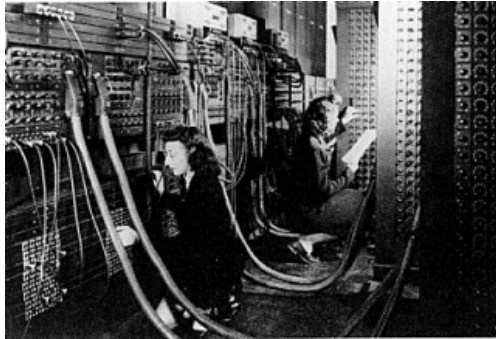


Welcome

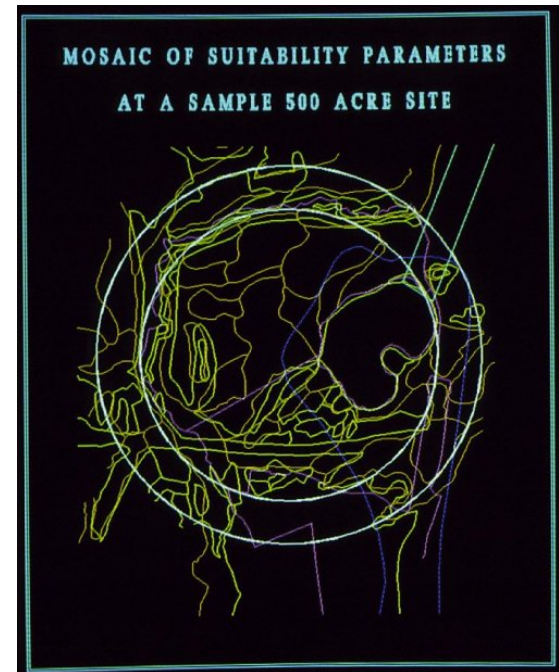
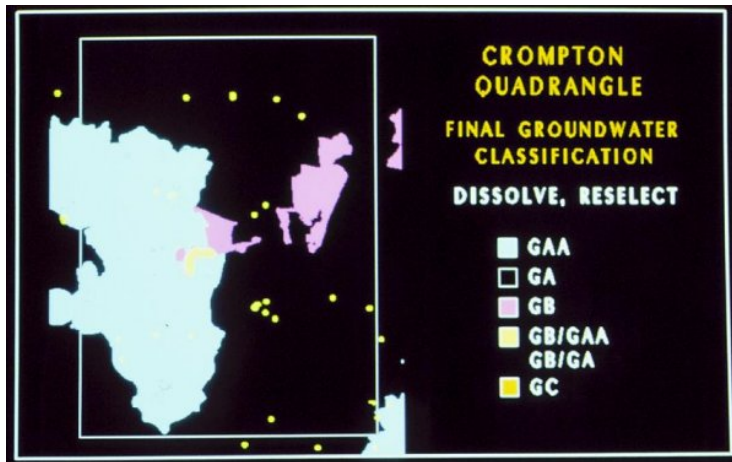
Rapid Watershed Assessments:
What We Know, What We Don't Know, and
Where We Need to Go

GIS's Fundamental Challenge: Effective Communication



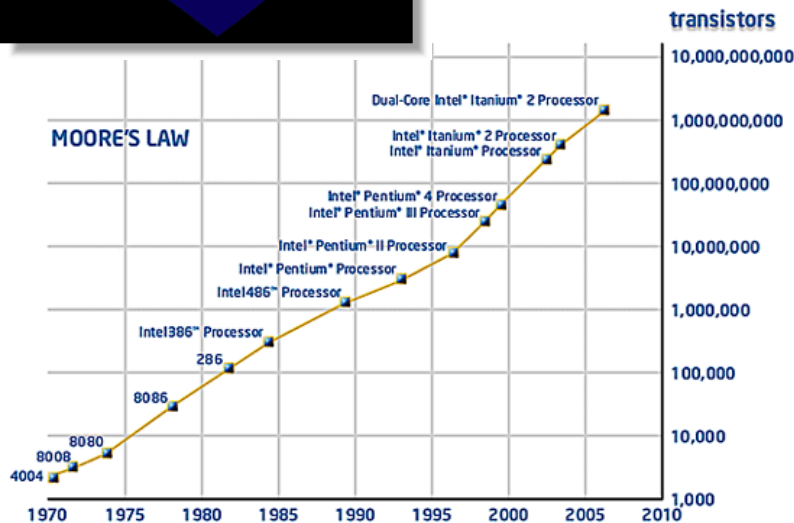
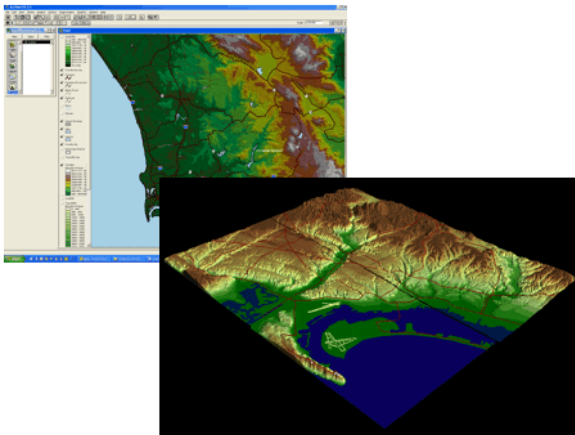
Some Things Don't Change

How do you translate complex geospatial data into useful information for decision-makers

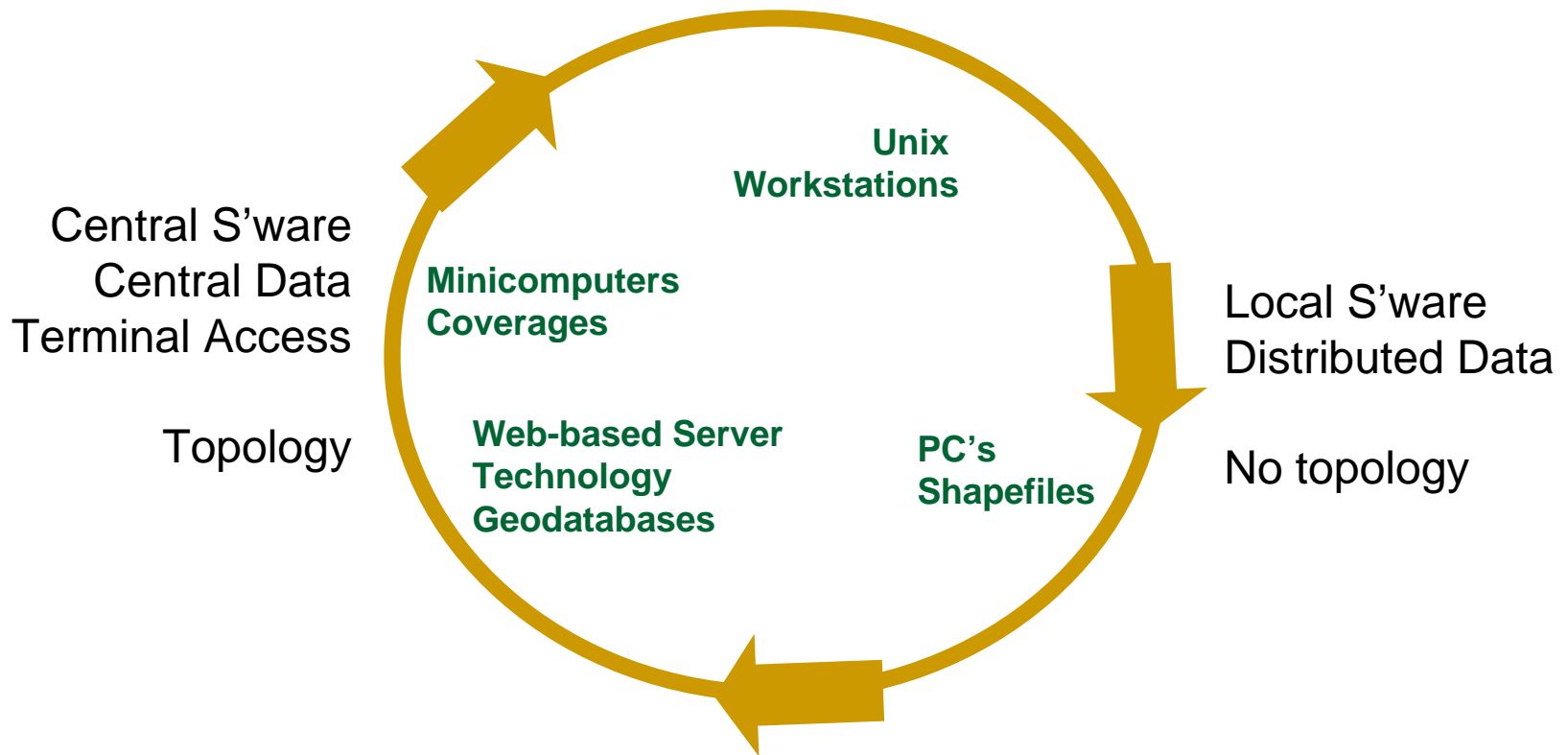


Some Things Change A Lot

How do you translate complex geospatial data into useful information for decision-makers



Some Things Come Full Circle



Purpose of Today's Forum

- Overarching Theme: Watershed-based information systems
- Briefing on hottest technologies and data by USDA, USFS, USGS, and EPA
- See some emerging examples of information dissemination systems to communicate information to consumers
- Understand what the information consumers need
- Determine if there are any gaps between the needs of consumers and the services new systems will deliver

Niceties

- Cell phones to silent mode
- Hold questions until discussion periods

