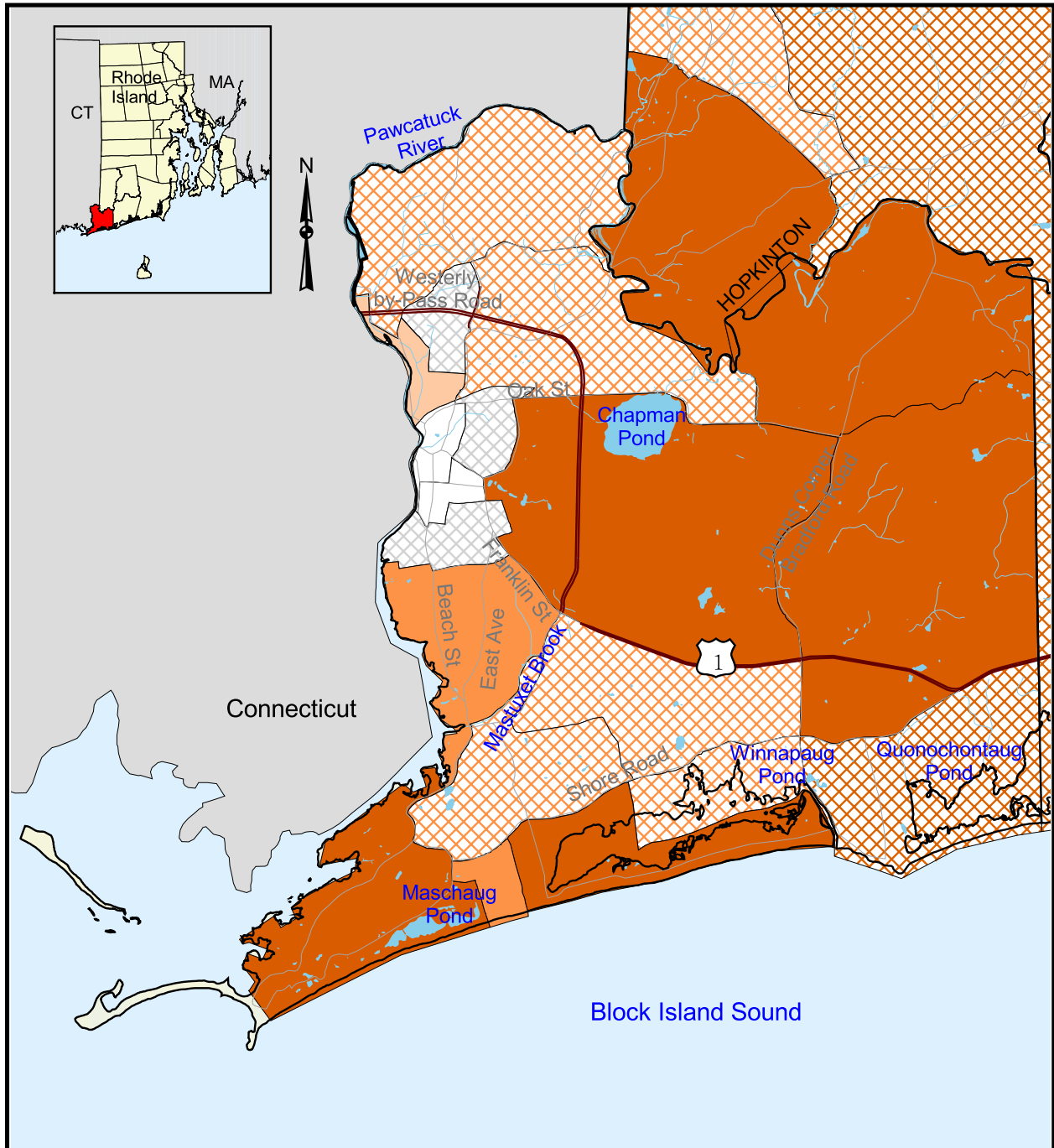
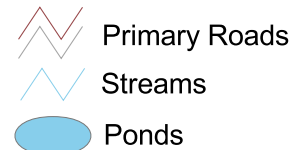
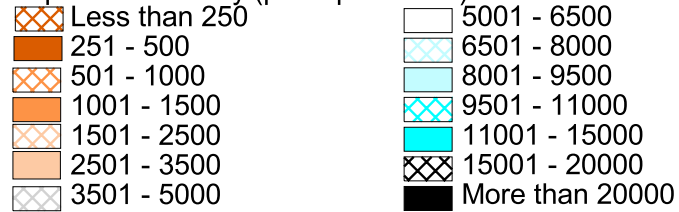


1990 Population Distribution in Westerly, Rhode Island



Population Density (per square mile)



0 0.5 1 Kilometers

0 0.5 1 Miles

Scale = 1:90,000

Source: All data layers used to create this map were produced by the University of Rhode Island's Environmental Data Center for the Rhode Island Geographic Information System (RIGIS). Population data were collected by the U.S. Census Bureau.