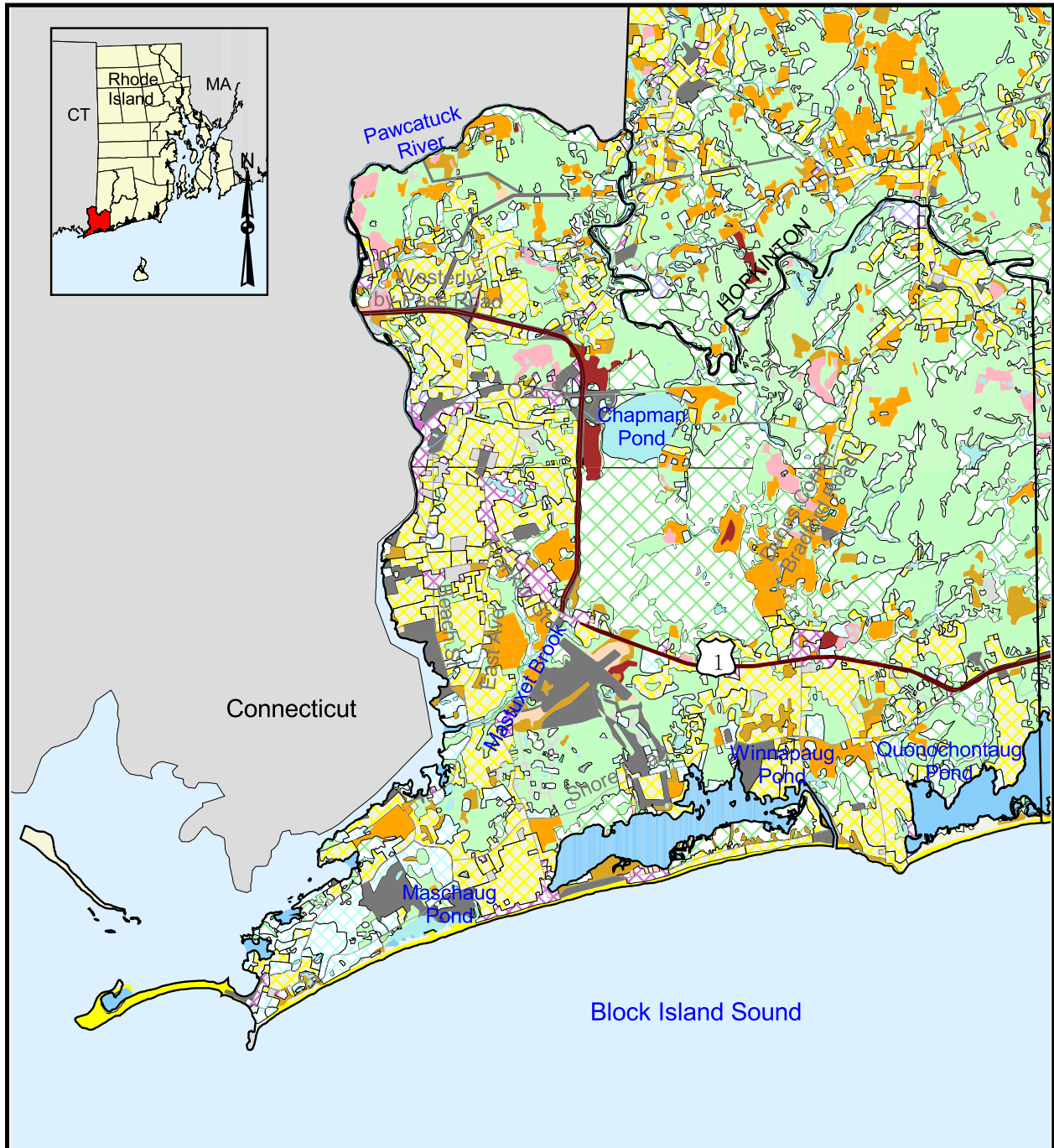


1995 Land Use in Westerly, Rhode Island



Land Use Classes			
	Agriculture		Industrial
	Barren Areas		Infrastructure
	Beaches		Mining
	Brushland		Residential
	Commercial		Rock Outcrops
	Commercial/Industrial		Salt Water
	Developed		Sandy Areas
	Forest		Urban
	Vacant Land		Waste Disposal
	Fresh Water		Wetland
	Primary Roads		Streams
	Ponds		

0 0.5 1 Kilometers

0 0.5 1 Miles

Scale = 1:90,000

Source: All data layers used to create this map were produced by the University of Rhode Island's Environmental Data Center for the Rhode Island Geographic Information System (RIGIS). Land use data were developed from 1988 aerial photography and updated using 1992-1995 orthophotography.