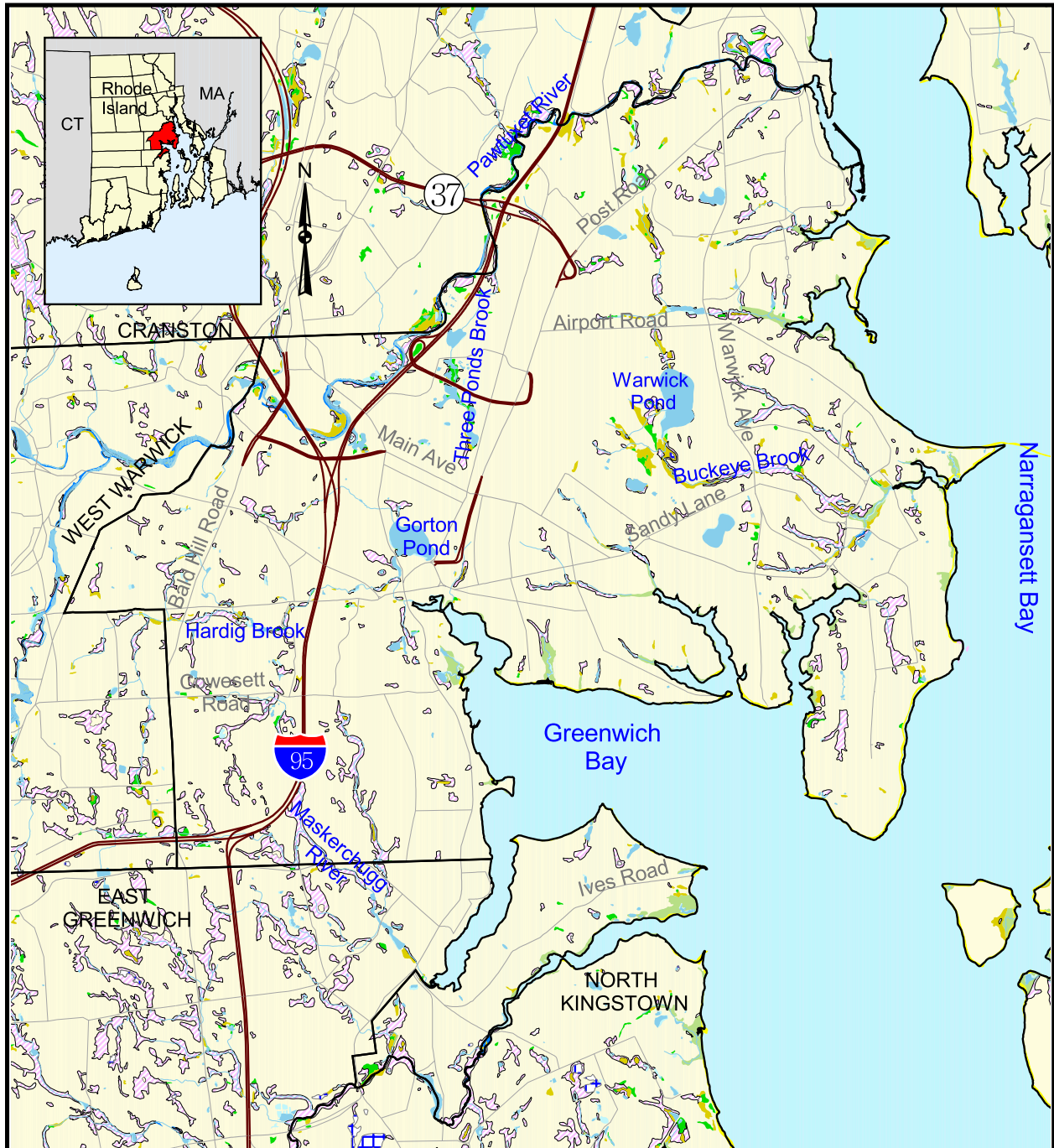


Wetland Distribution in Warwick, Rhode Island (1988)



Wetland Types

- Emergent Fen
- Emergent Marsh
- Estuarine Emergent
- Estuarine Scrub-Shrub
- Coniferous Forested
- Dead Forested Wetland

- Deciduous Forested Wetland
- Marine/Est. Rocky Shore
- Marine/Est. Unconsolidated
- Open Water
- Riverine Nontidal
- Riverine Tidal
- Scrub-Shrub Wetland
- Upland

- Primary Roads
- Streams
- Ponds

0 1 2 Kilometers

0 1 2 Miles

Scale = 1:95,000

Source: All data layers used to create this map were produced by the University of Rhode Island's Environmental Data Center for the Rhode Island Geographic Information System (RIGIS). Wetland data were developed from 1988 aerial photography.