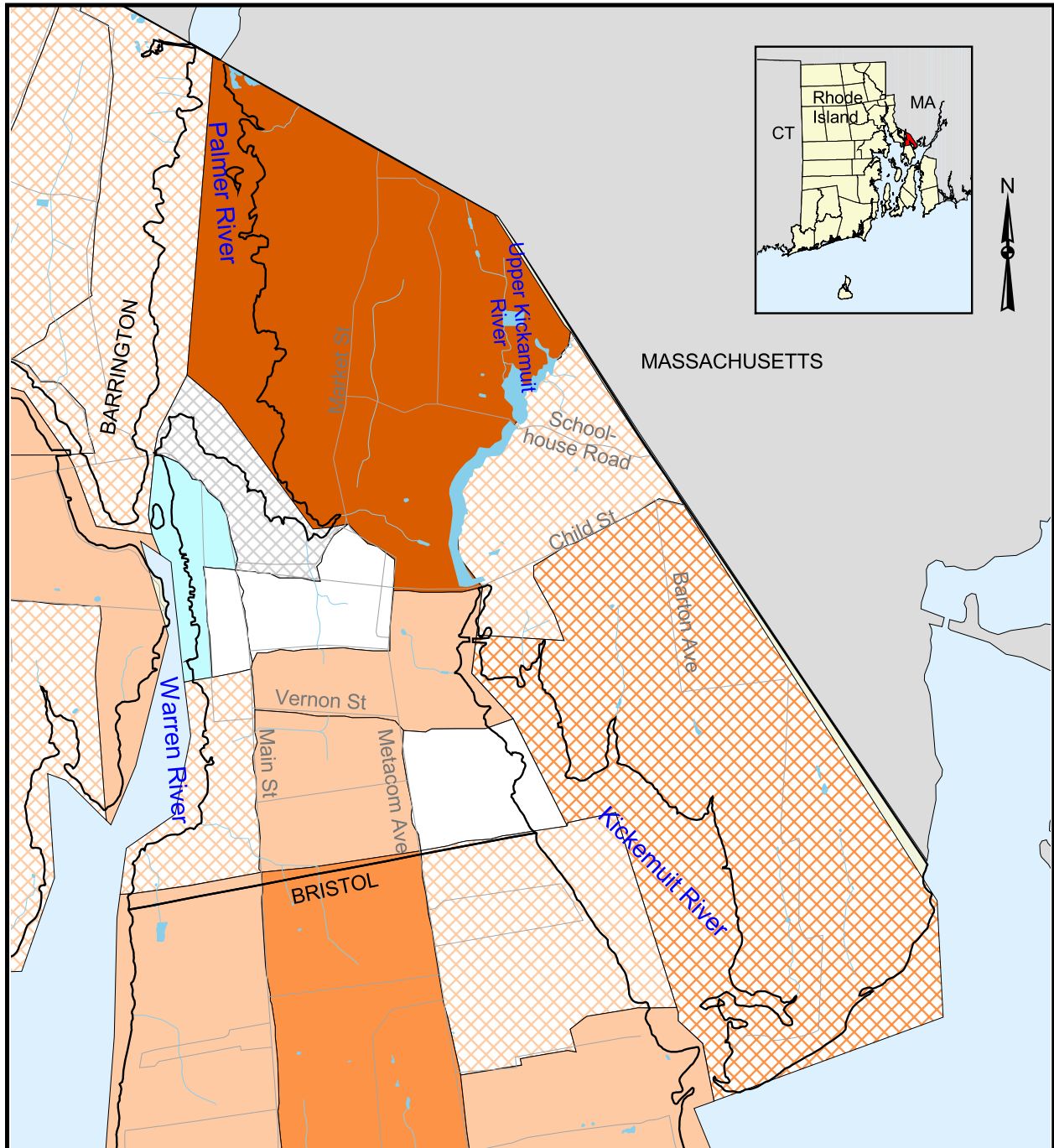


# 1990 Population Distribution in Warren, Rhode Island



Population Density (per square mile)

Less than 250	5001 - 6500
251 - 500	6501 - 8000
501 - 1000	8001 - 9500
1001 - 1500	9501 - 11000
1501 - 2500	11001 - 15000
2501 - 3500	15001 - 20000
3501 - 5000	More than 20000

- Primary Roads
- Streams
- Ponds

0 0.25 0.5 Kilometers

0 0.25 0.5 Miles

Scale = 1:45,000

Source: All data layers used to create this map were produced by the University of Rhode Island's Environmental Data Center for the Rhode Island Geographic Information System (RIGIS). Population data were collected by the U.S. Census Bureau.