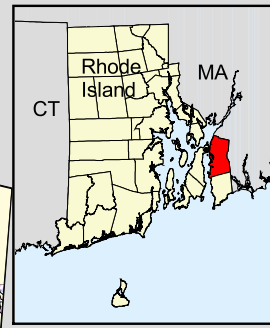
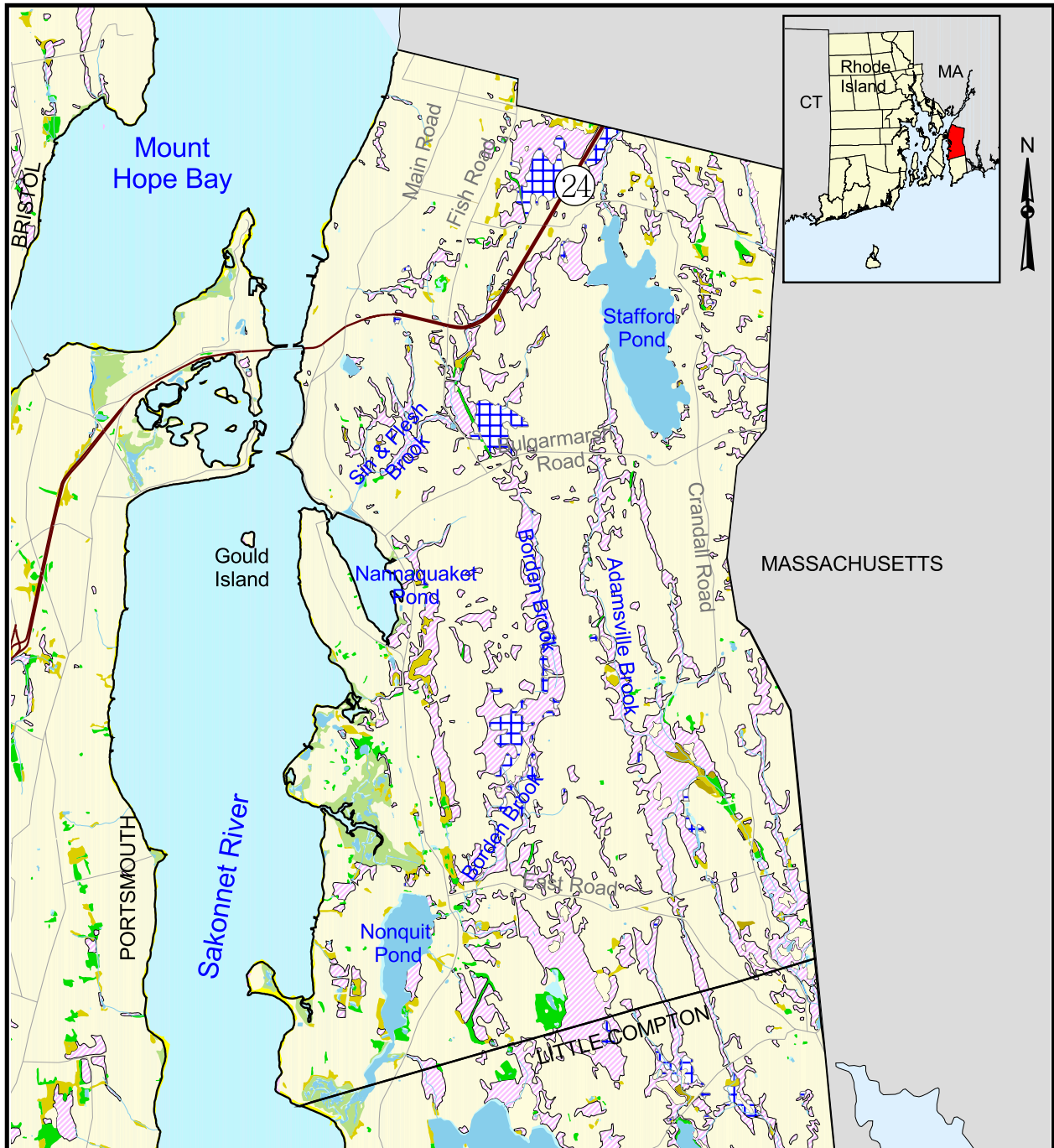


Wetland Distribution in Tiverton, Rhode Island (1988)



Wetland Types	Deciduous Forested Wetland	Primary Roads
Emergent Fen	Marine/Est. Rocky Shore	Streams
Emergent Marsh	Marine/Est. Unconsolidated	Ponds
Estuarine Emergent	Open Water	
Estuarine Scrub-Shrub	Riverine Nontidal	
Coniferous Forested	Riverine Tidal	
Dead Forested Wetland	Scrub-Shrub Wetland	
	Upland	

Source: All data layers used to create this map were produced by the University of Rhode Island's Environmental Data Center for the Rhode Island Geographic Information System (RIGIS). Wetland data were developed from 1988 aerial photography.

0 0.5 1 Kilometers

0 0.5 1 Miles

Scale = 1:90,000

