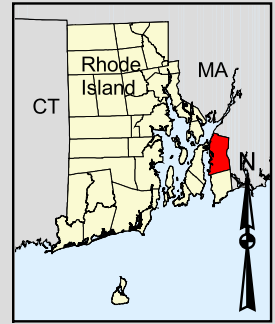
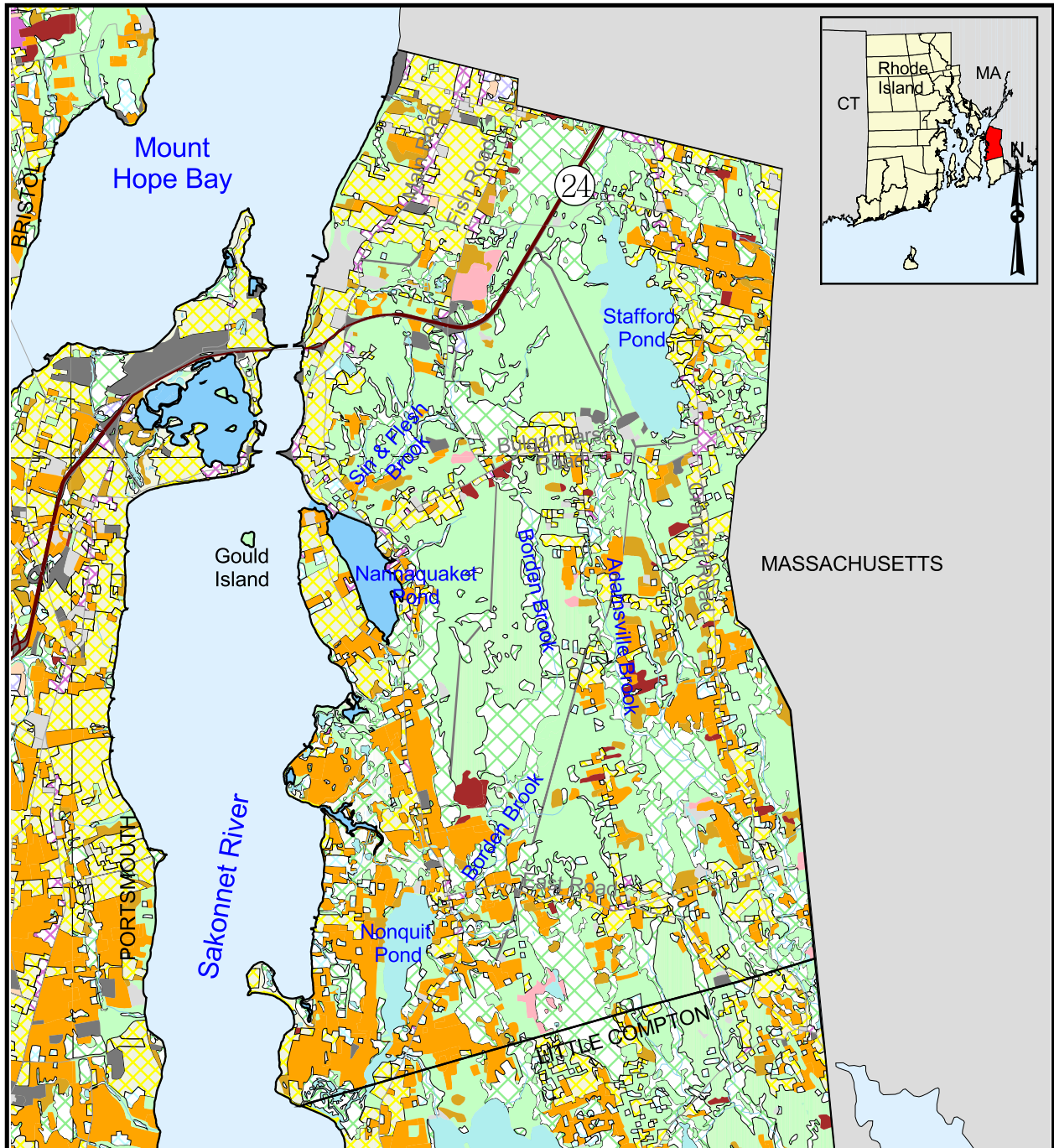


1995 Land Use in Tiverton, Rhode Island



Land Use Classes			
Agriculture	Industrial	Vacant Land	Primary Roads
Barren Areas	Infrastructure	Waste Disposal	
Beaches	Mining	Fresh Water	Streams
Brushland	Residential	Wetland	Ponds
Commercial	Rock Outcrops		0 0.5 1 Kilometers
Commercial/Industrial	Salt Water		0 0.5 1 Miles
Developed	Sandy Areas		
Forest	Urban		

Source: All data layers used to create this map were produced by the University of Rhode Island's Environmental Data Center for the Rhode Island Geographic Information System (RIGIS). Land use data were developed from 1988 aerial photography and updated using 1992-1995 orthophotography.

Scale = 1:90,000