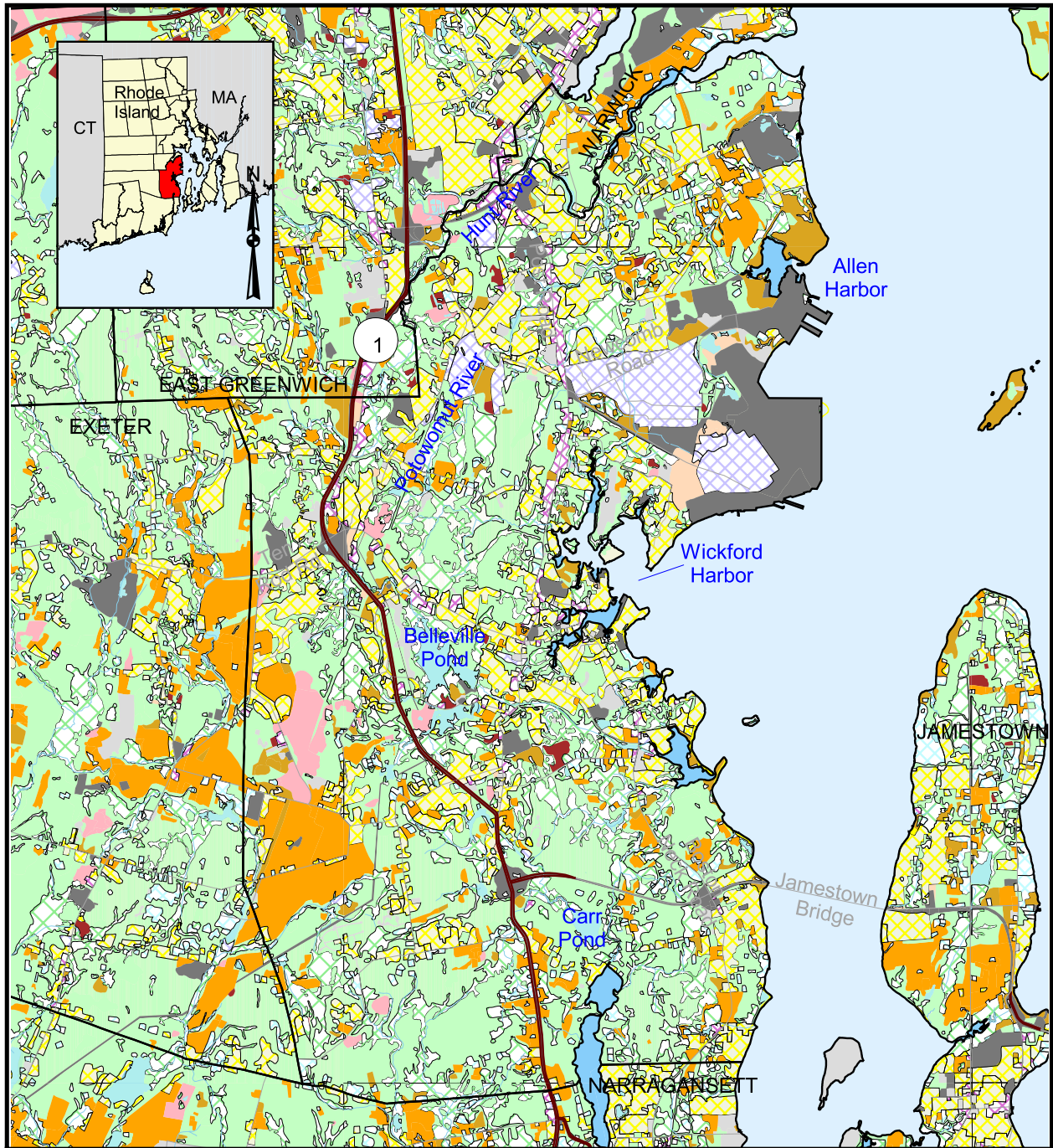


1995 Land Use in North Kingstown, Rhode Island



Land Use Classes			
	Agriculture		Industrial
	Barren Areas		Infrastructure
	Beaches		Mining
	Brushland		Residential
	Commercial		Wetland
	Commercial/Industrial		Rock Outcrops
	Developed		Salt Water
	Forest		Sandy Areas
			Urban
			Vacant Land
			Waste Disposal
			Fresh Water
			Streams
			Ponds
			Primary Roads

Source: All data layers used to create this map were produced by the University of Rhode Island's Environmental Data Center for the Rhode Island Geographic Information System (RIGIS). Land use data were developed from 1988 aerial photography and updated using 1992-1995 orthophotography.

0 1 2 Kilometers
0 1 2 Miles
Scale = 1:110,000