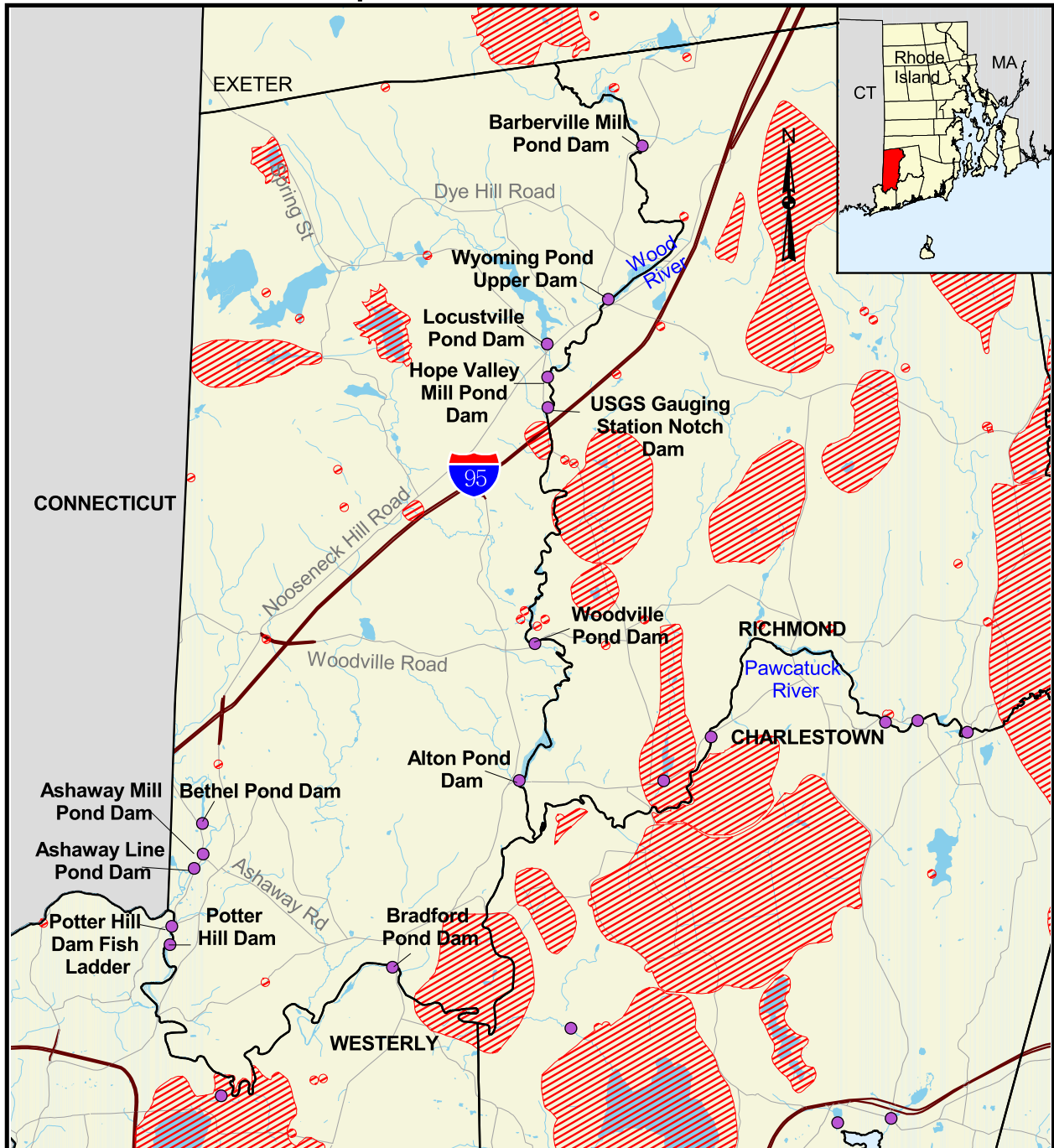


Rare Species Habitat Distribution and Restoration Sites in Hopkinton, Rhode Island



Restoration Type

- Artificial Reef
- Salt Marsh
- Seagrass (Eelgrass)
- Anadromous Fish Habitat
- Grassland
- Riverine Floodplain
- Shellfish/Water Quality
- ▨ Rare Species Habitats

Primary Roads

Streams

Ponds

0 1 2 Kilometers

0 1 2 Miles

Scale = 1:115,000

Source: All data layers used to create this map were produced by the University of Rhode Island's Environmental Data Center for the Rhode Island Geographic Information System (RIGIS).