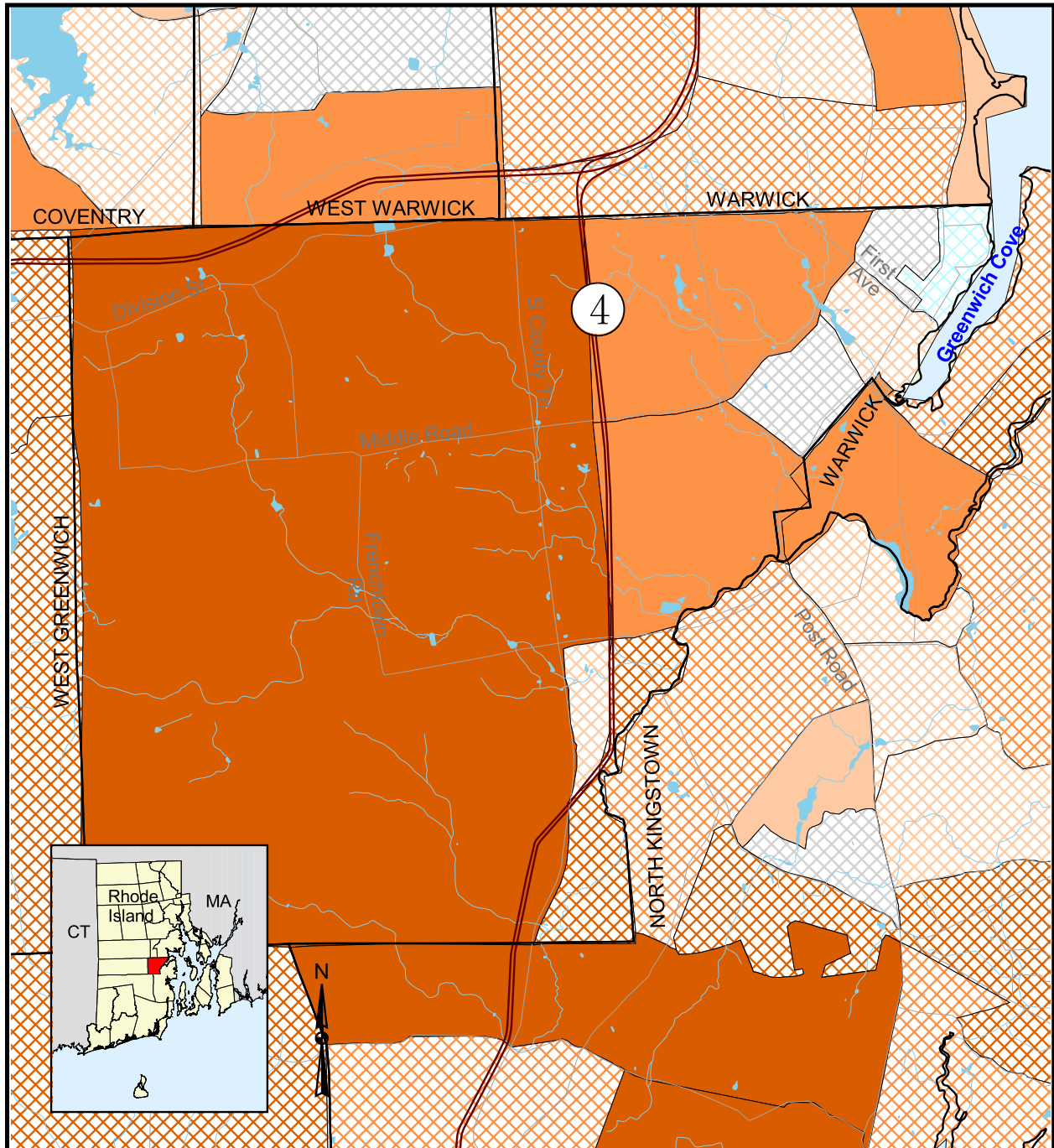


# 1990 Population Distribution in East Greenwich, Rhode Island



## Population Density (per square mile)

	Less than 250		5001 - 6500
	251 - 500		6501 - 8000
	501 - 1000		8001 - 9500
	1001 - 1500		9501 - 11000
	1501 - 2500		11001 - 15000
	2501 - 3500		15001 - 20000
	3501 - 5000		More than 20000

Primary Roads

Streams

Ponds

0 0.5 1 Kilometers

0 0.5 1 Miles

Scale = 1:60,000

Source: All data layers used to create this map were produced by the University of Rhode Island's Environmental Data Center for the Rhode Island Geographic Information System (RIGIS). Population data were collected by the U.S. Census Bureau.