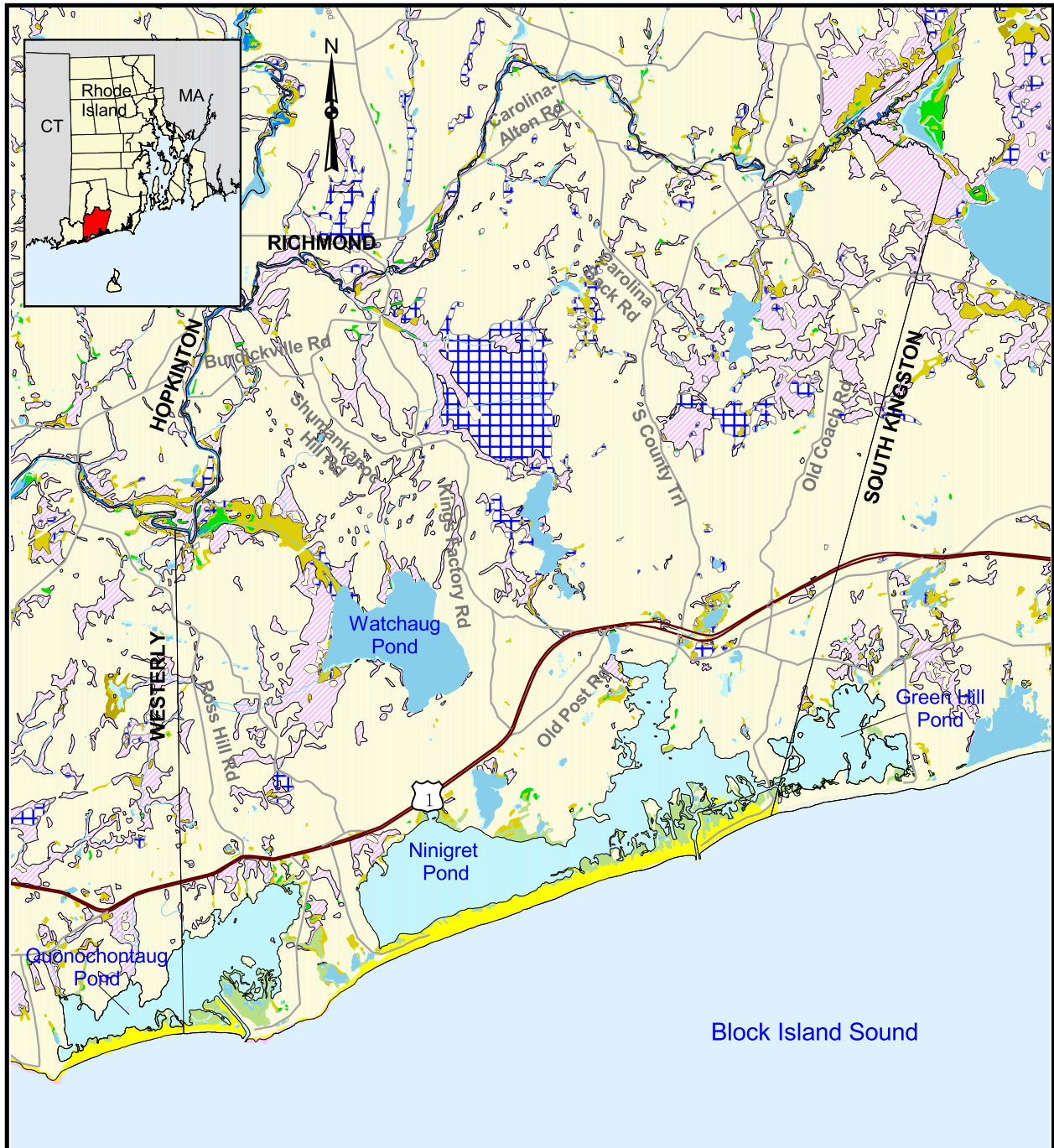


Wetland Distribution in Charlestown, Rhode Island (1988)



Wetland Types

- | | |
|-----------------------|----------------------------|
| Emergent Fen | Deciduous Forested Wetland |
| Emergent Marsh | Marine/Est. Rocky Shore |
| Estuarine Emergent | Marine/Est. Unconsolidated |
| Estuarine Scrub-Shrub | Open Water |
| Coniferous Forested | Riverine Nontidal |
| Dead Forested Wetland | Riverine Tidal |
| | Scrub-Shrub Wetland |
| | Upland |

- | | |
|--|---------------|
| | Primary Roads |
| | Streams |
| | Ponds |

0 1 2 Kilometers

0 1 2 Miles

Scale = 1:95,000

Source: All data layers used to create this map were produced by the University of Rhode Island's Environmental Data Center for the Rhode Island Geographic Information System (RIGIS). Wetland data were developed from 1988 aerial photography.