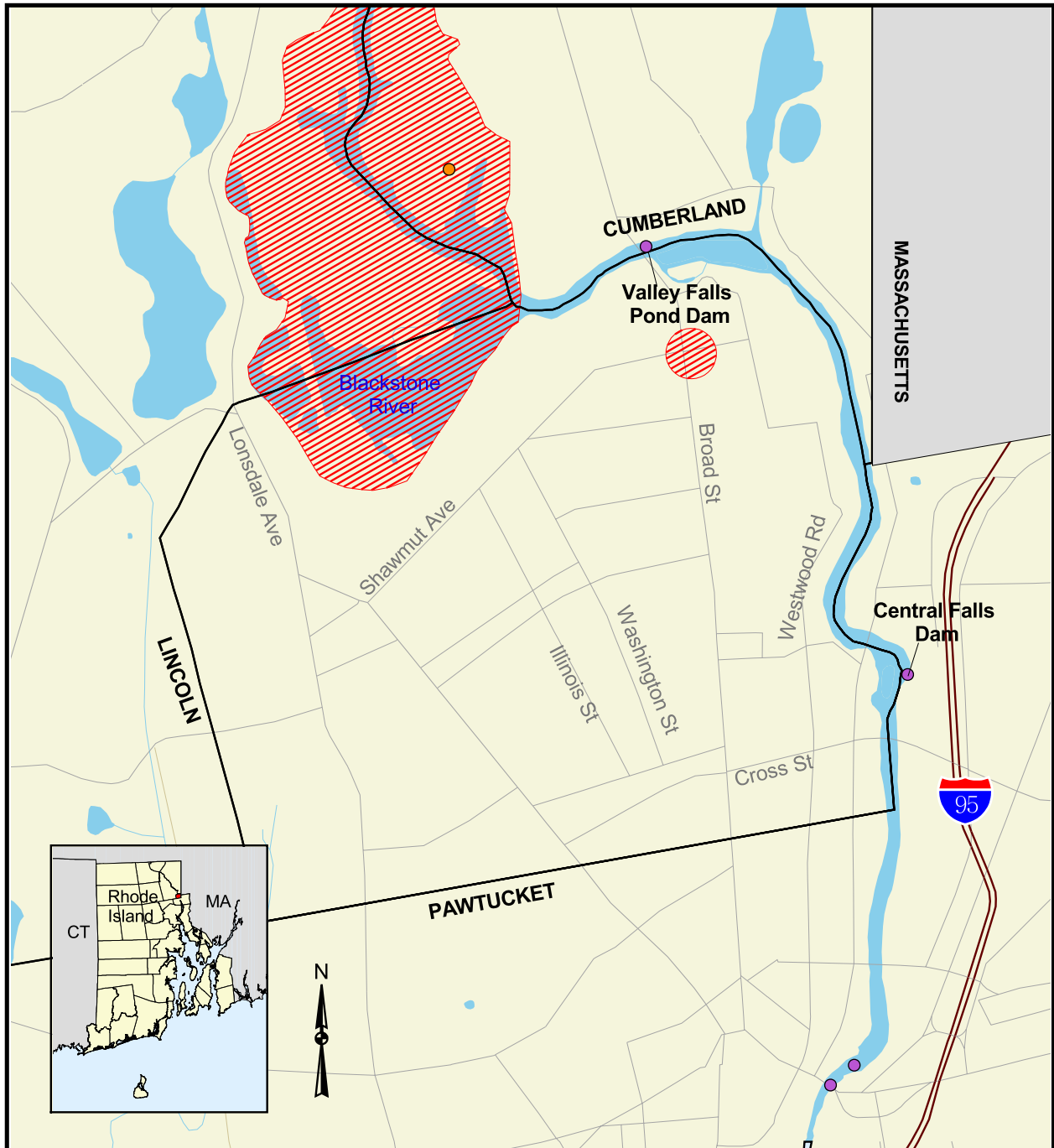


Rare Species Habitat Distribution and Restoration Sites in Central Falls, Rhode Island



Restoration Type

- Artificial Reef
- Salt Marsh
- Seagrass (Eelgrass)
- Anadromous Fish Habitat
- Grassland
- Riverine Floodplain
- Shellfish/Water Quality
- ▨ Rare Species Habitats

0 0.25 0.5 Kilometers

0 0.25 0.5 Miles

Scale = 1:20,000

- ▬ Primary Roads
- ▬ Streams
- Ponds

Source: All data layers used to create this map were produced by the University of Rhode Island's Environmental Data Center for the Rhode Island Geographic Information System (RIGIS).