

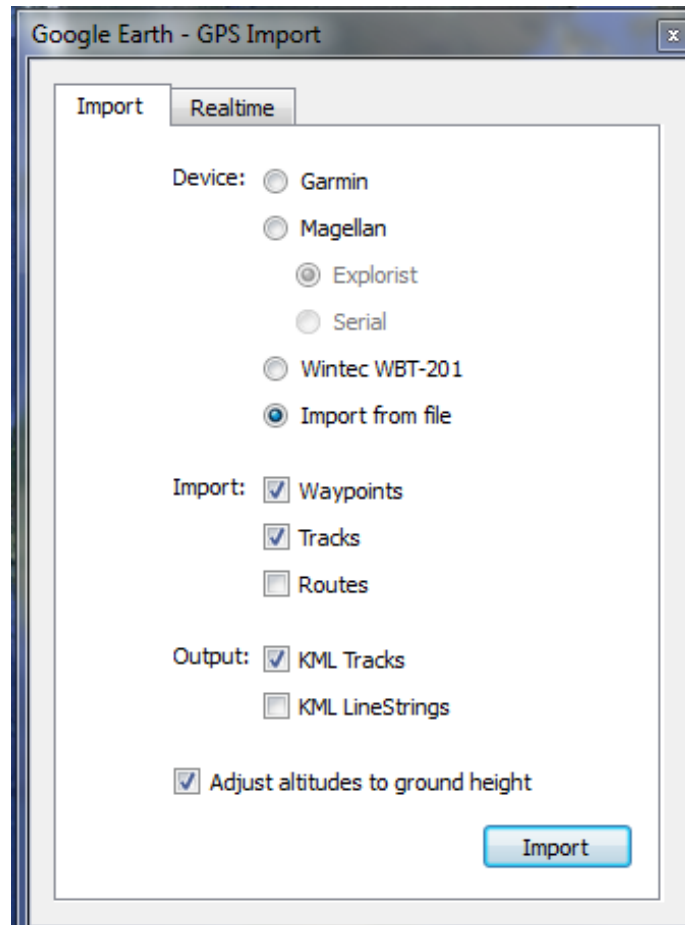
Moving GPS Data From the Garmin eTrex to Google Earth

Getting data off the GPSmap 60CSx:

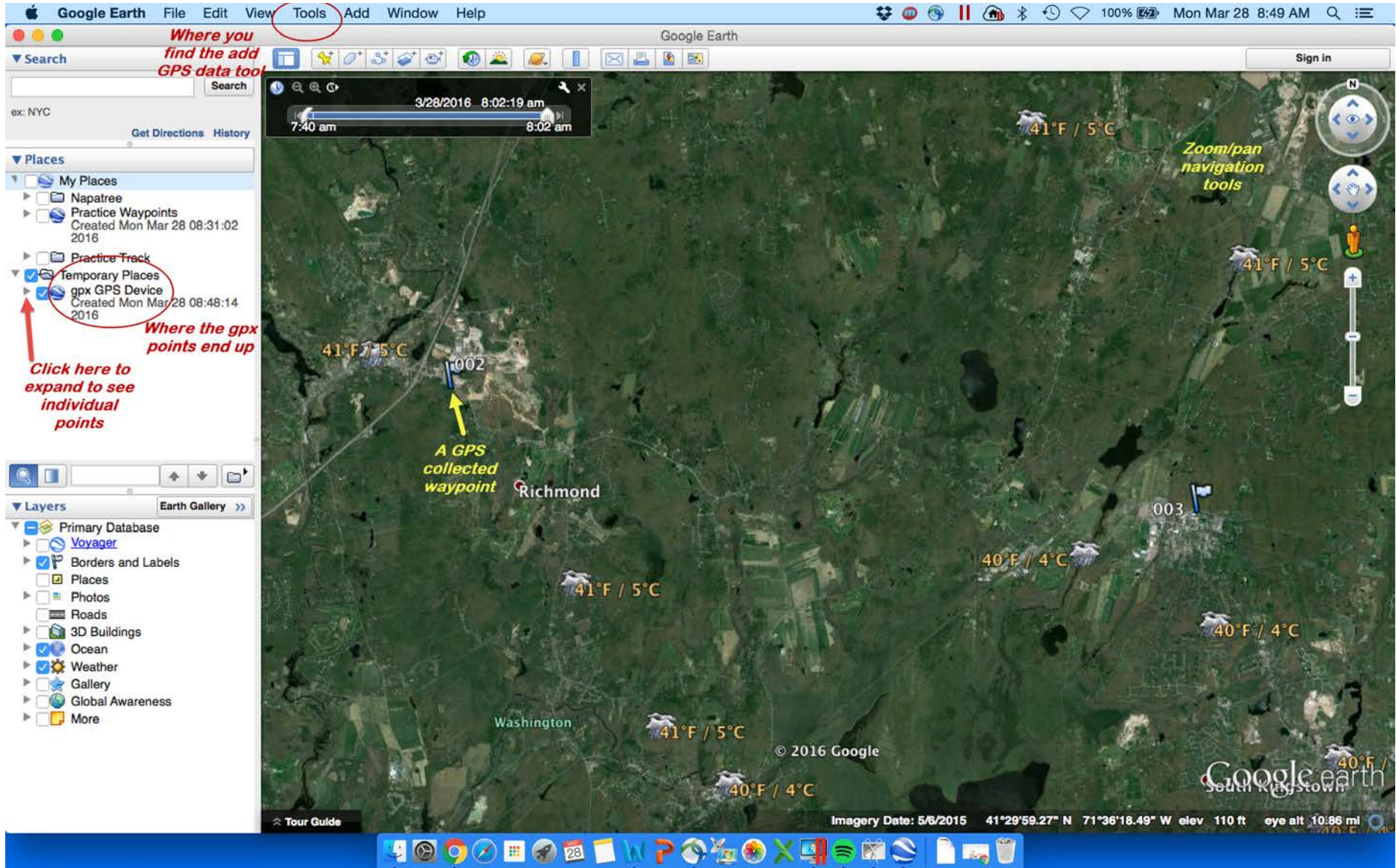
1. Plug in Garmin to computer using a USB cable.
2. Click “**Yes**” to go to mass storage device.
3. Wait a few seconds, Garmin folder will appear on desktop
 - a. **Double click** on the Garmin folder
 - b. **Navigate to folder GARMIN > GPX**
 - c. Copy the file “waypoints_{DATE}.gpx” to a folder on your computer
4. **Close** out of Finder / Windows Explorer
5. **Right click** on Garmin icon on desktop, or in your toolbar icons and choose **Eject**.

Loading points into Google Earth:

1. Go to FINDER > APPLICATIONS or to START MENU > ALL PROGRAMS
2. **Open** Google Earth
 - a. On menu bar at top, go to **TOOLS > GPS** (see graphic below)
 - b. Make the following selections on the pop-up window:
 - i. Device = **Import from file**
 - ii. Import = **Waypoints and Tracks**
 - iii. Output = **KML Tracks**
 - iv. Click **IMPORT** button at bottom of the dialog.



- c. Navigate to folder containing your saved GPX from the Garmin. **Select this file.**
- d. Waypoints will appear in the “**Temporary Places**” folder under the **Places** heading on the left of the screen.
 - i. **Check the box** next to the Temporary Places folder to turn on your new layers.
 - ii. Click on the arrowheads (see graphic below) to expand GPX GPS Device folder.
 - 1. Double click on your right facing arrowhead to expand folder.
 - 2. Double click on an individual waypoint and it will zoom to it.



Where you find the add GPS data tool

Where the gpx points end up
Click here to expand to see individual points

Zoom/pan navigation tools

A GPS collected waypoint

Imagery Date: 5/8/2015 41°29'59.27" N 71°38'18.49" W elev 110 ft eye alt 10.86 mi