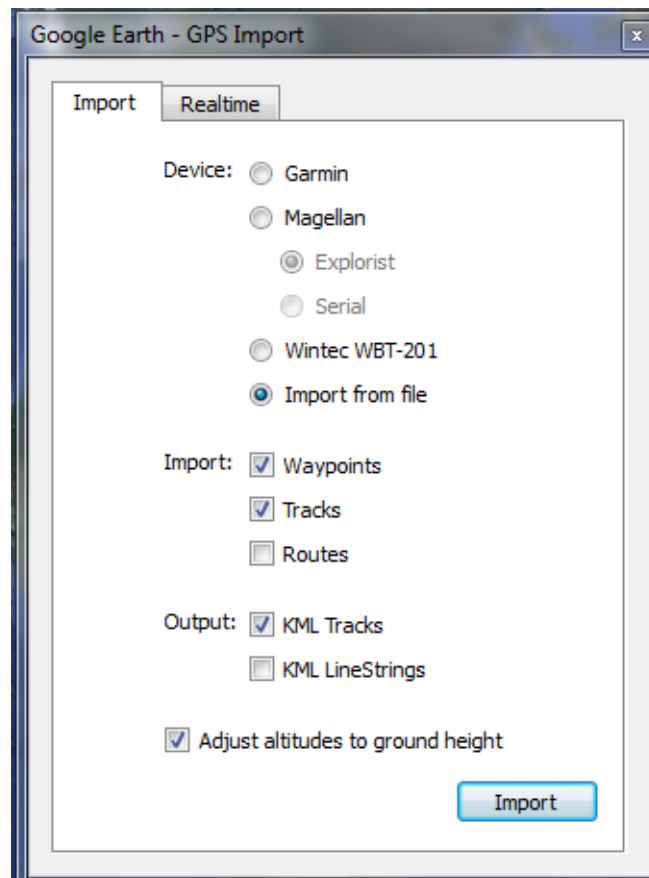
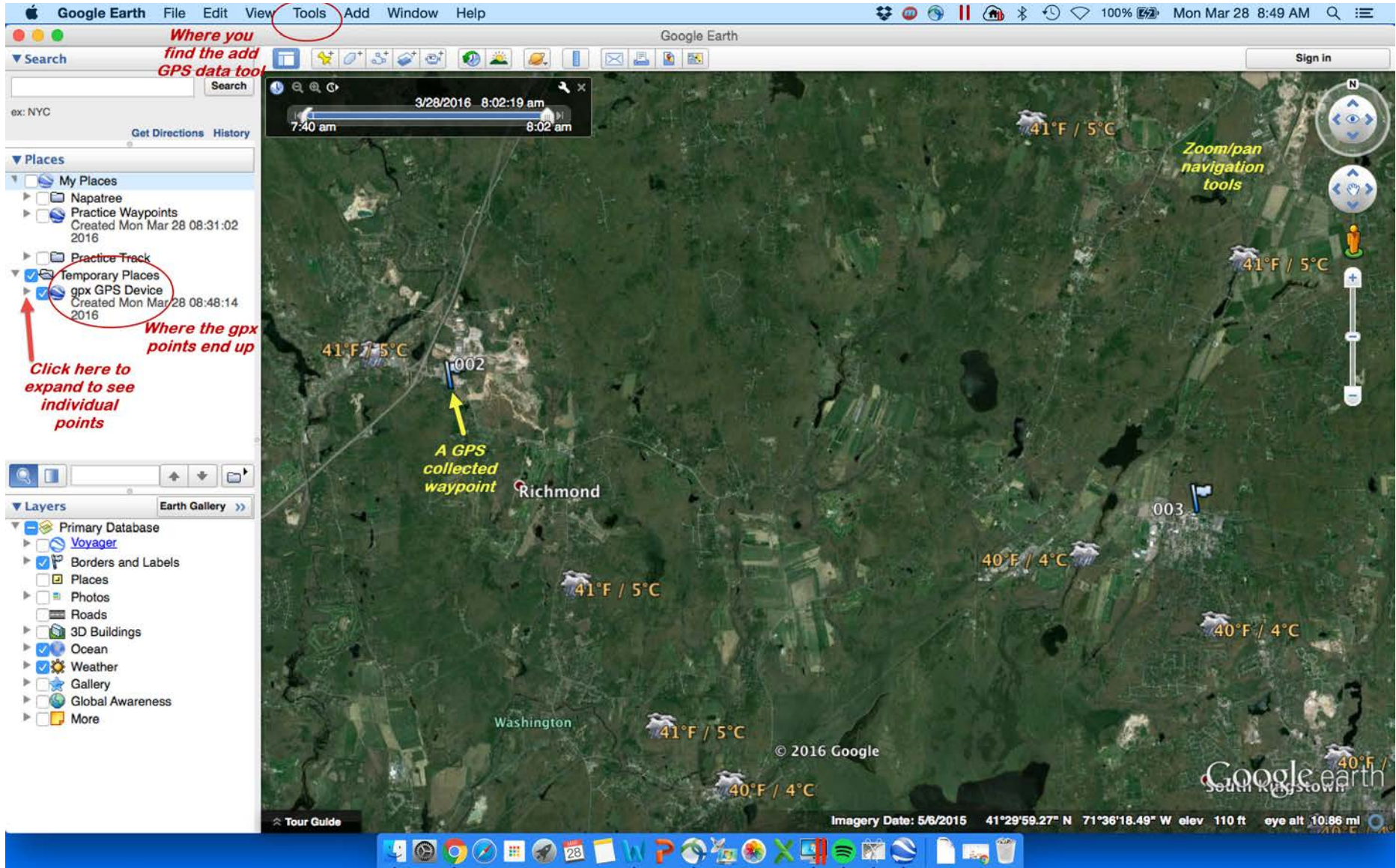


Moving GPS Data From the Garmin GPSmap 60CSx to Google Earth

1. Go to FINDER > APPLICATIONS **or** to START MENU > ALL PROGRAMS
2. **Open** Google Earth
 - a. On menu bar at top, go to **TOOLS > GPS** (see graphic below)
 - b. Make the following selections on the pop-up window:
 - i. Device = **Garmin**
 - ii. Import = **Waypoints and Tracks**
 - iii. Output = **KML Tracks**
 - iv. Click **IMPORT** button at bottom of the dialog.



- c. Waypoints will appear in the “**Temporary Places**” folder under the **Places** heading on the left of the screen.
 - i. **Check the box** next to the Temporary Places folder to turn on your new layers.
 - ii. Click on the arrowheads (see graphic below) to expand GPX GPS Device folder.
 1. Double click on your right facing arrowhead to expand folder.
 2. Double click on an individual waypoint and it will zoom to it.



Where you find the add GPS data tool

Click here to expand to see individual points

Where the gpx points end up

Zoom/pan navigation tools

A GPS collected waypoint